

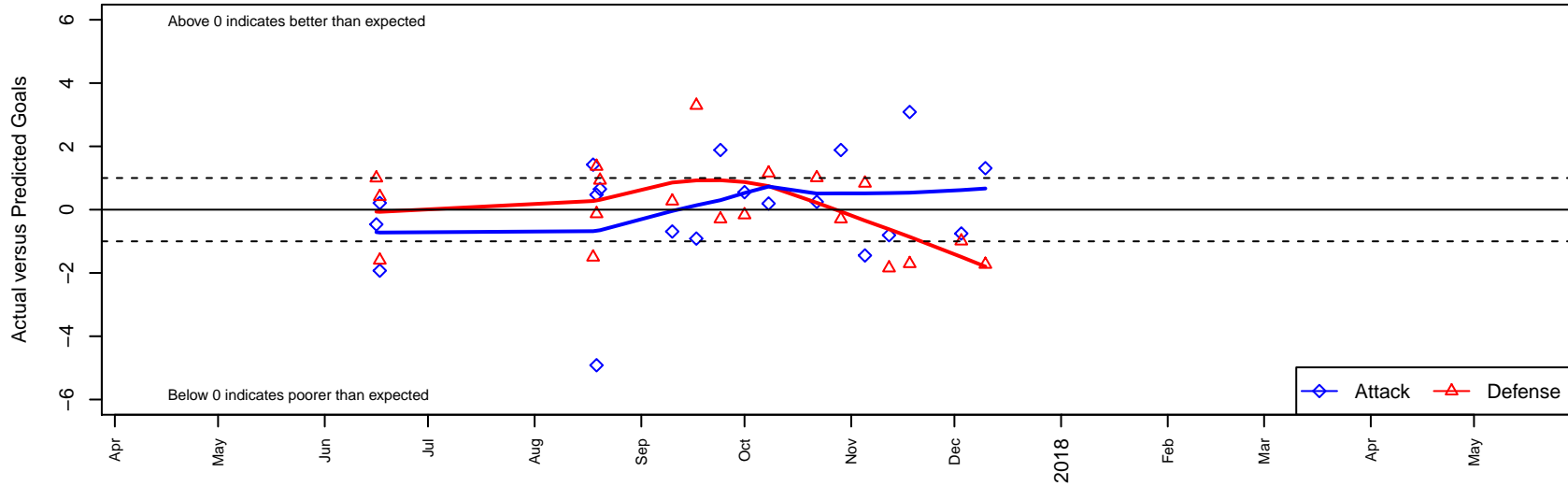
NSC Green Wave B01

Northshore SC
 Woodinville, WA
 B01 total strength=1492
 attack=17.65 defense=6.84
 fall league = NPSL DIVISION 1 (01) U17

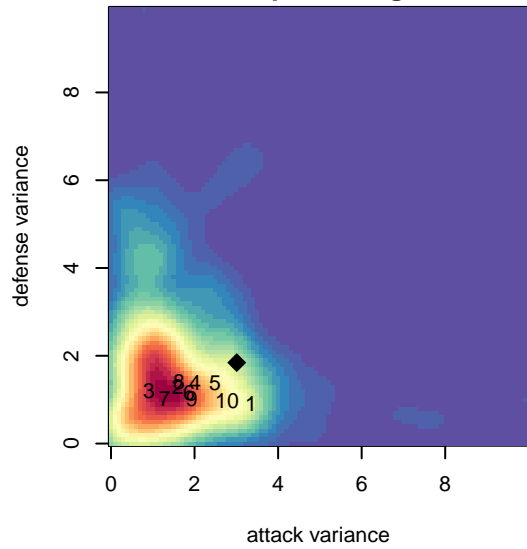
alt names used:
 NSC B01 Green-Wave
 NSC B01 Green-Wave
 NSC B01 Wave

Venues played:
 2017 Starfire Spring Classic BU17
 2017 Xtreme Cup BU17
 2017 NPSL DIVISION 1 (01) U17

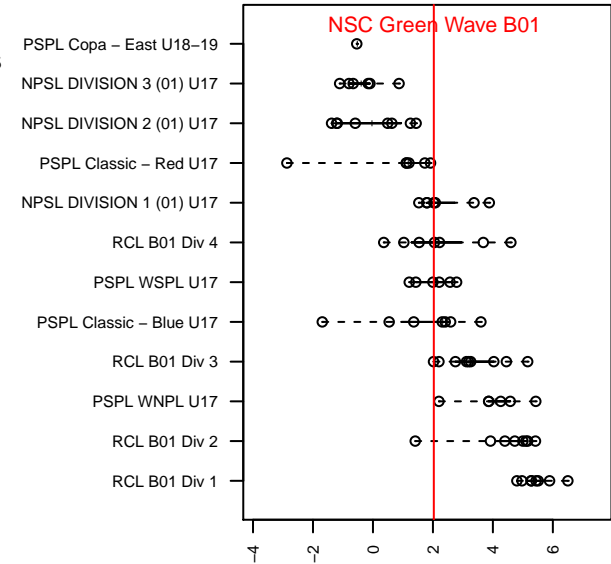
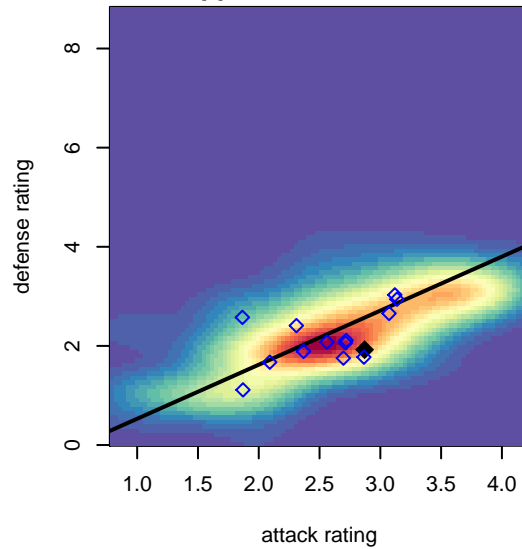
NSC Green Wave B01
 Dots are actual minus expected GF (blue circles) and GA (red triangles).
 Blue line is smoothed change in attack strength. Red is smoothed change in defense strength.



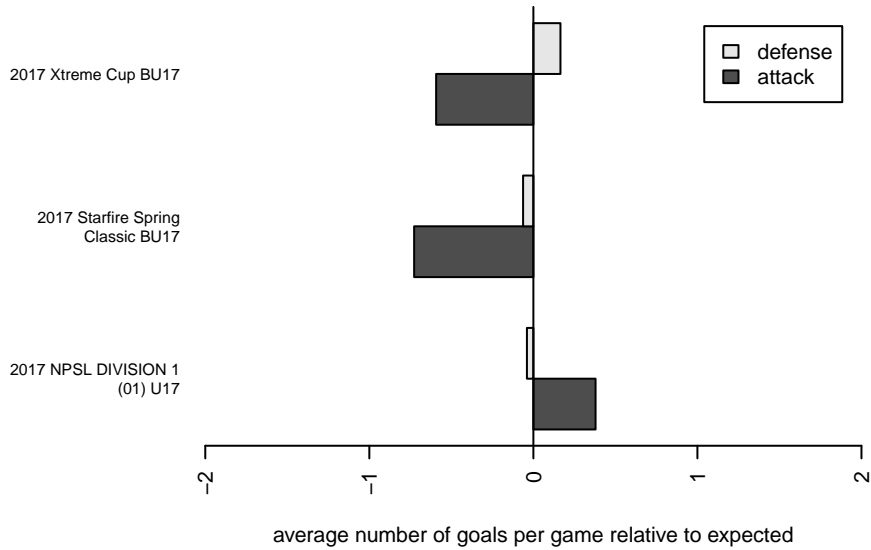
**attack and defense variance (black dot)
relative to other teams
and top 10 in region**



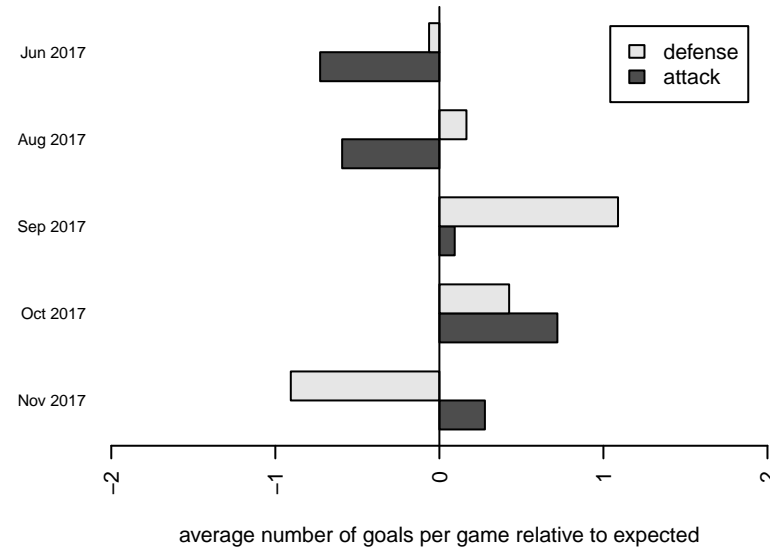
**attack and defense rating
relative to others at age
and all opponents in last 13 months**



Performance relative to 13 month average



Performance relative to 13 month average



| date | home | | away | | venue | pred.home | pred.away |
|-------------|-----------------------------|---|-----------------------------|---|-----------------------------------|------------------|------------------|
| 2017-12-10 | Southlake Select Vipers B01 | 4 | NSC Green Wave B01 | 4 | 2017 NPSL DIVISION 1 (01) U17 | 2.27 | 2.69 |
| 2017-12-03 | NSC Green Wave B01 | 2 | Crossfire Select Taylor B01 | 3 | 2017 NPSL DIVISION 1 (01) U17 | 2.75 | 2.01 |
| 2017-11-18 | Storm King B01 | 5 | NSC Green Wave B01 | 4 | 2017 NPSL DIVISION 1 (01) U17 | 3.29 | 0.91 |
| 2017-11-12 | STU Evolution Black B01 | 4 | NSC Green Wave B01 | 1 | 2017 NPSL DIVISION 1 (01) U17 | 2.16 | 1.81 |
| 2017-11-05 | NSC Green Wave B01 | 0 | Seattle United S Blue B01 | 2 | 2017 NPSL DIVISION 1 (01) U17 | 1.45 | 2.83 |
| 2017-10-29 | NSC Green Wave B01 | 4 | Seattle United W Blue B01 | 2 | 2017 NPSL DIVISION 1 (01) U17 | 2.12 | 1.70 |
| 2017-10-22 | Crossfire Select Taylor B01 | 1 | NSC Green Wave B01 | 3 | 2017 NPSL DIVISION 1 (01) U17 | 2.01 | 2.75 |
| 2017-10-08 | NSC Green Wave B01 | 2 | STU Evolution Black B01 | 1 | 2017 NPSL DIVISION 1 (01) U17 | 1.81 | 2.16 |
| 2017-10-01 | Seattle United S Blue B01 | 3 | NSC Green Wave B01 | 2 | 2017 NPSL DIVISION 1 (01) U17 | 2.83 | 1.45 |
| 2017-09-24 | Seattle United W Blue B01 | 2 | NSC Green Wave B01 | 4 | 2017 NPSL DIVISION 1 (01) U17 | 1.70 | 2.12 |
| 2017-09-17 | NSC Green Wave B01 | 0 | Storm King B01 | 0 | 2017 NPSL DIVISION 1 (01) U17 | 0.91 | 3.29 |
| 2017-09-10 | NSC Green Wave B01 | 2 | Southlake Select Vipers B01 | 2 | 2017 NPSL DIVISION 1 (01) U17 | 2.69 | 2.27 |
| 2017-08-20 | FWFC Select 2 B01 | 0 | NSC Green Wave B01 | 2 | 2017 Xtreme Cup BU17 | 0.93 | 1.35 |
| 2017-08-19 | Newport FC Barca B01 | 1 | NSC Green Wave B01 | 0 | 2017 Xtreme Cup BU17 | 0.87 | 4.92 |
| 2017-08-19 | NSC Green Wave B01 | 2 | Seattle Celtic Green B01 | 0 | 2017 Xtreme Cup BU17 | 1.53 | 1.37 |
| 2017-08-18 | NSC Green Wave B01 | 4 | FWFC Select 1 B01 | 3 | 2017 Xtreme Cup BU17 | 2.58 | 1.50 |
| 2017-06-17 | Eclipse FC B01 | 2 | NSC Green Wave B01 | 0 | 2017 Starfire Spring Classic BU17 | 2.41 | 1.93 |
| 2017-06-17 | NSC Green Wave B01 | 1 | Fraser Valley Selects B01 | 5 | 2017 Starfire Spring Classic BU17 | 0.79 | 3.40 |
| 2017-06-16 | ISC Gunners B B01 | 0 | NSC Green Wave B01 | 3 | 2017 Starfire Spring Classic BU17 | 1.00 | 3.46 |